



Oxford Gardens, London, W4 3BN

£1,095,000

WHITMAN & CO.

SALES · LETTINGS · COMMERCIAL

- Four-bedroom family house
- Two bathrooms
- Fantastic transport links
- Beautifully presented
- South-facing landscaped garden
- Quiet cul-de-sac

Tenure - Freehold
Local Authority - Hounslow
Council Tax - Band E

THE PROPERTY

A well presented four-bedroom period family home, ideally located on a quiet cul-de-sac, offering close proximity to a wide range of amenities. The property features a master bedroom with a luxury ensuite, three additional double bedrooms, a family bathroom, two reception rooms, a spacious 17' fully fitted kitchen/breakfast room, and a cloakroom. The south-facing, private landscaped garden adds to the appeal. Conveniently situated near tube, bus, and rail networks, as well as Strand on the Green and the extensive facilities of Chiswick High Road

Oxford Gardens, W4

Approximate gross internal area

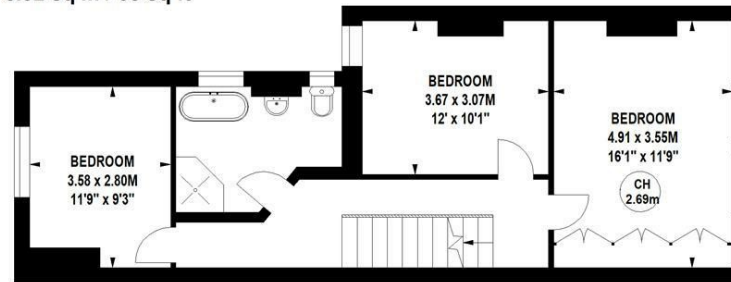
161.65 sq m / 1740 sq ft
(Including Eaves Storage)

Eaves Storage
6.32 sq m / 68 sq ft

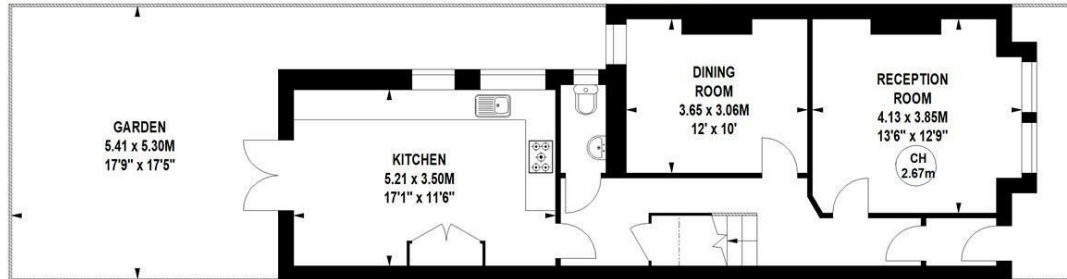
Key :
CH - Ceiling Height



Second Floor



First Floor



Ground Floor

Not to scale, for guidance only and must not be relied upon as a statement of fact.
All measurements and areas are approximate only

SITUATION



5-7 Turnham Green Terrace, Chiswick, London, W4 1RG

Tel 020 8747 8800

E-mail sales@whitmanandco.com

Website www.whitmanandco.com



MISREPRESENTATION ACT 1967

Whitman & Co. for themselves and for the vendors give notice that these particulars do not constitute any part of, an offer of contract. All statements contained in these particulars are made without responsibility on the part of Whitman & Co. or the vendor. None of the statements contained in these particulars is to be relied upon as statements or representations of facts. Any intending purchaser must satisfy himself by inspection or otherwise as to the correctness of each of the statements contained in these particulars. The vendor does not make or give, and neither Whitman & Co. or any person in their employment has any authority to make or give, any representation or warranty whatever in relation to the property.